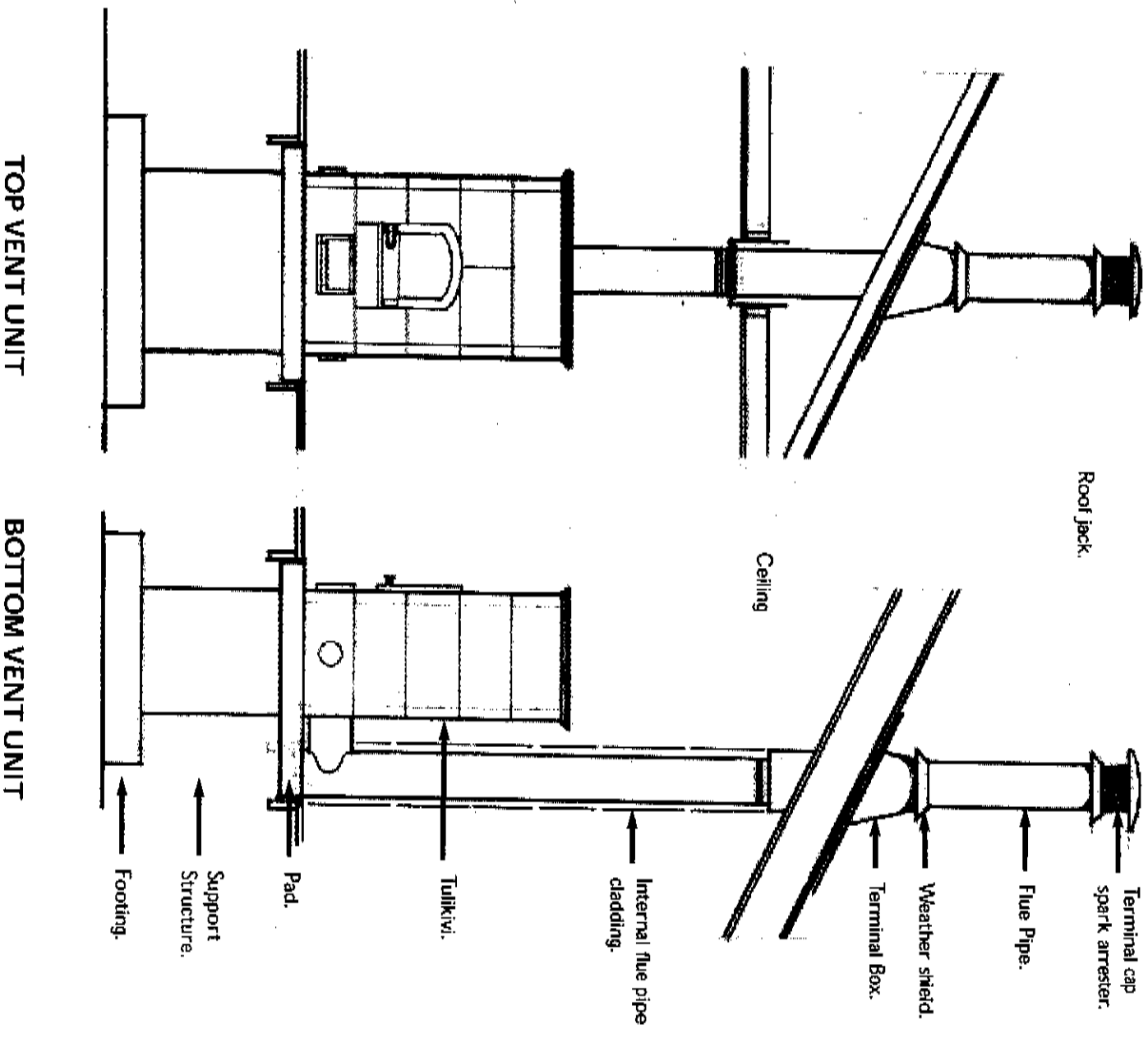


# SCOPE OF WORK

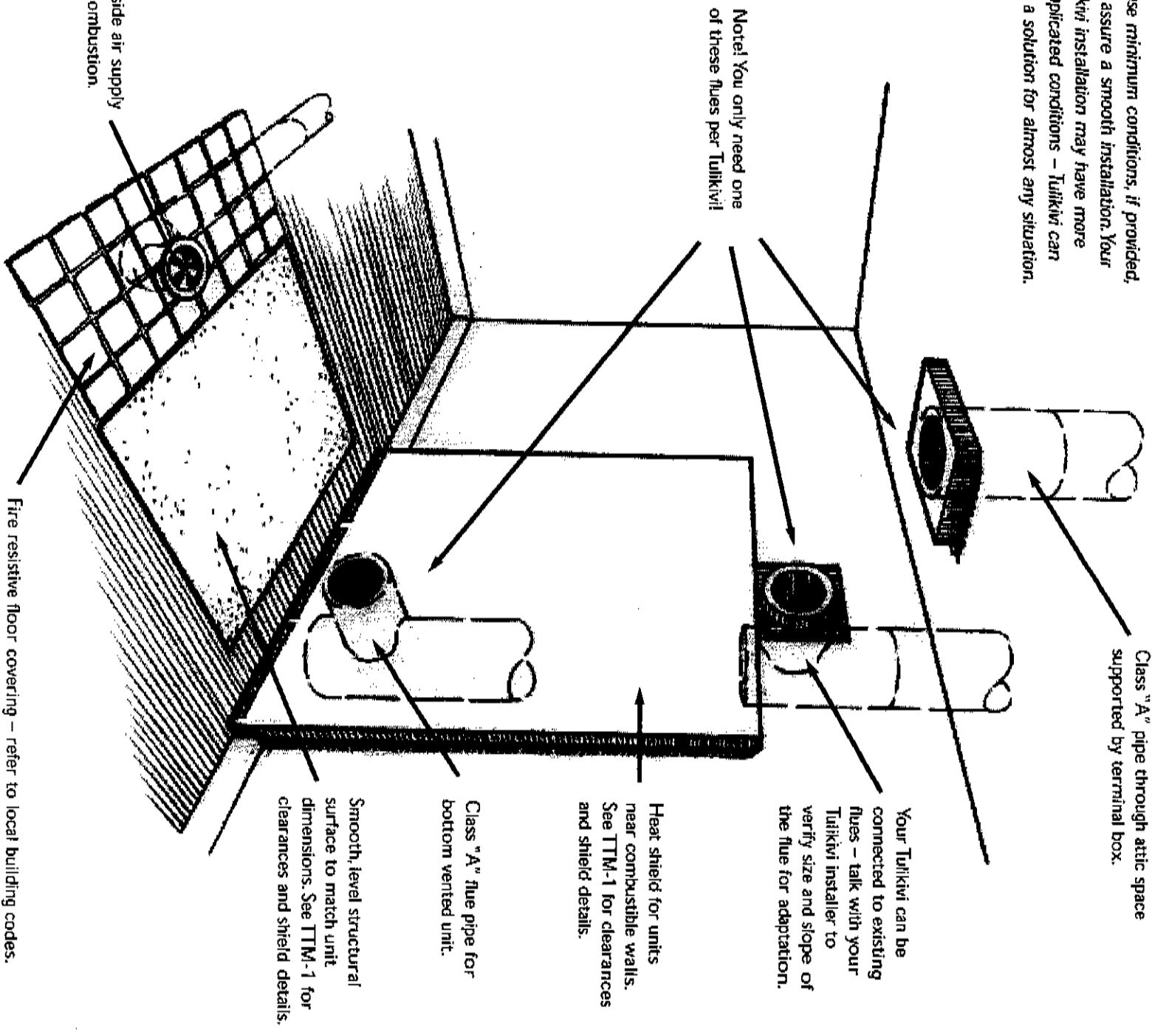


© 2022 Tulkivi U.S., Inc.

Tulkivi provides these drawings as a conceptual aid for the North American market. They illustrate some common conditions installers have encountered and general methods which might be considered for addressing such conditions. Please note that this material is not tailored to any particular condition; is not intended to be a substitute for or supplant the technical manual TTM-7, and is not a warranty with respect to the merchantability, suitability, or fitness for a particular purpose regarding Tulkivi products or the methods illustrated. It is not designed to replace good engineering practice, local building codes or the formal and practical training and advice of a qualified builder. The material only suggests ways architects, engineers, builders, installers and owners can enhance their projects by including a Tulkivi fireplace, bakeoven or cookstone.

# BASIC TULIKIVI REQUIREMENTS

*These minimum conditions, if provided, will assure a smooth installation. Your Tulikivi installation may have more complicated conditions – Tulikivi can find a solution for almost any situation.*

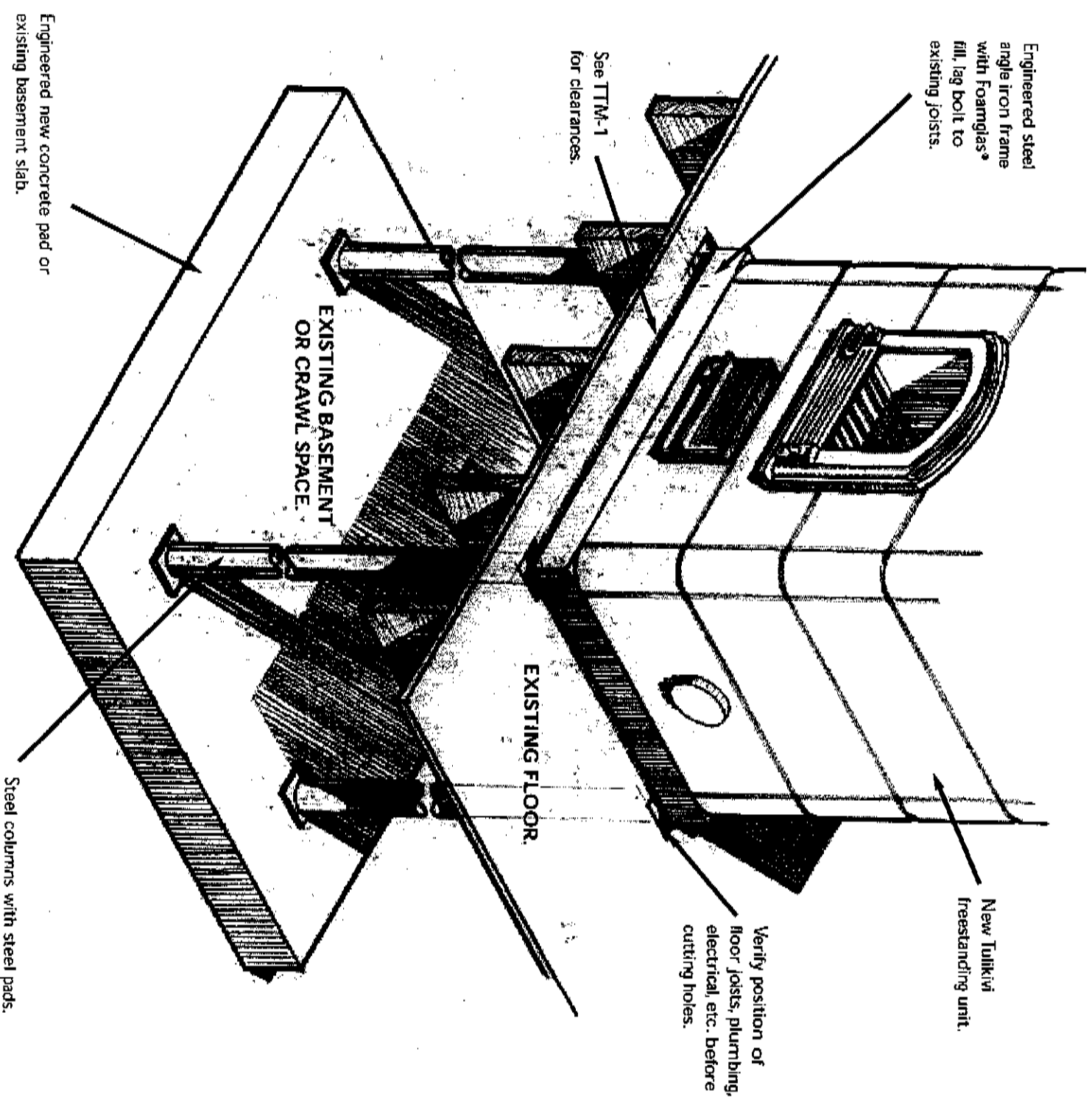


©1990 Tulikivi U.S., Inc.

*Tulikivi provides these drawings as a conceptual aid for the North American market. They illustrate some common conditions installers have encountered and general methods which might be considered for addressing such conditions. Please note that this material is not tailored to any particular condition, is not intended to be a substitute for or supplant the technical manual TTM-1, and is not a warranty with respect to the merchantability, suitability or fitness for a particular purpose regarding Tulikivi products or the methods illustrated. It is not designed to replace good engineering practice, local building codes or the formal and practical training and advice of a qualified builder. The material only suggests ways architects, engineers, builders, installers and owners can enhance their projects by including a Tulikivi fireplace, hearth or cookstone.*

# STEEL SUPPORT (REMODEL)

1



©1990 Tulukiv U.S., Inc.

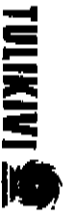
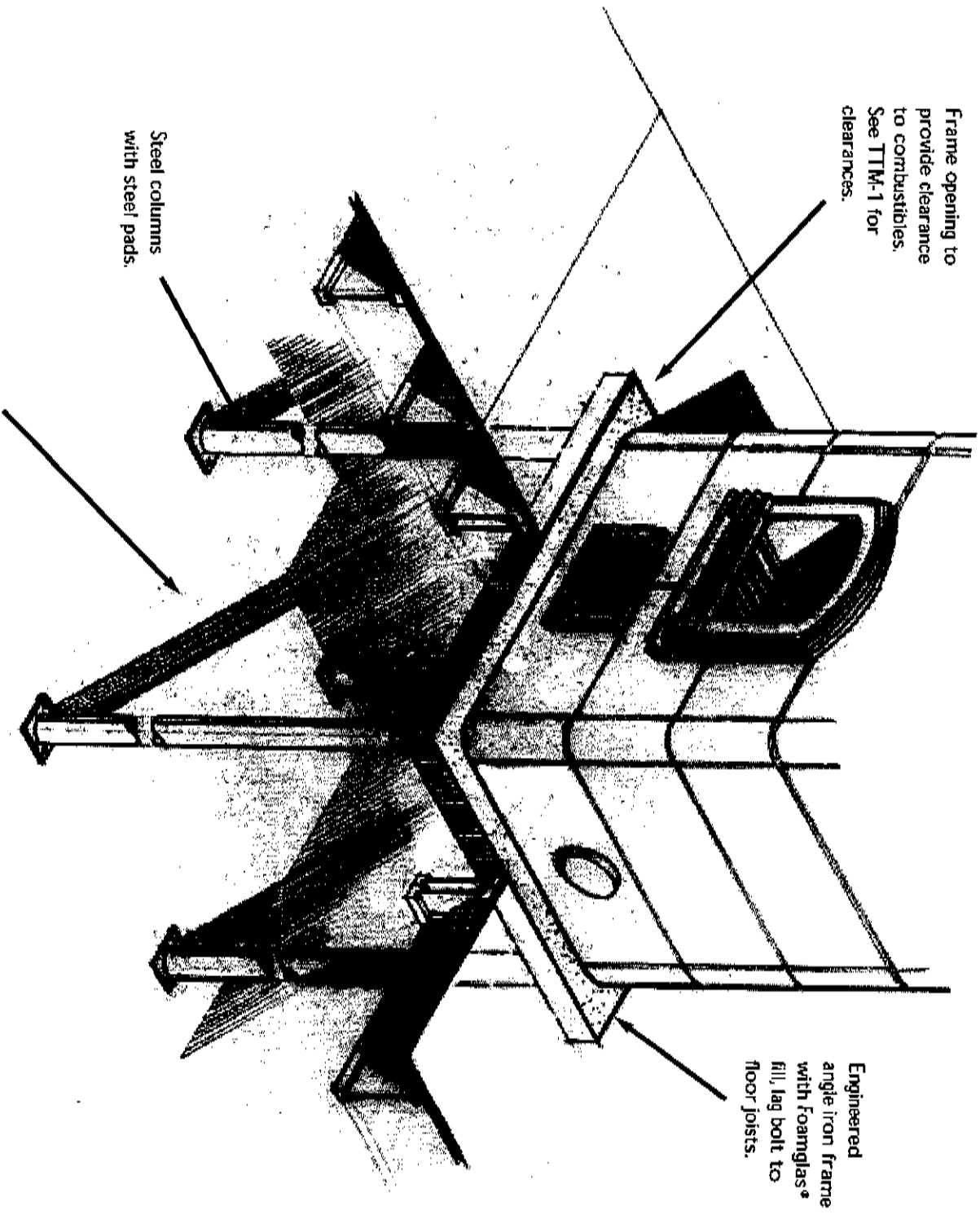
Tulukivi provides these drawings as a conceptual aid for the North American market. They illustrate some common conditions installers have encountered and general methods which might be considered for addressing such conditions. Please note that this material is not tailored to any particular condition; it is not intended to be a substitute for or supplant the technical manual TTM-1, and is not a warranty with respect to the merchantability, suitability, or fitness for a particular purpose regarding Tulukivi products or the methods illustrated. It is not designed to replace good engineering practice, local building codes or the formal and practical training and advice of a qualified builder. The material only suggests ways architects, engineers, builders, installers and owners can enhance their projects by including a Tulukivi fireplace, bakeoven or cookstone.

Foamglas® is a registered trademark of Pittsburgh Corning.

# 2

## STEEL SUPPORT (NEW CONSTRUCTION)

Freestanding Tulkivi unit.



31 000 Tulkivi U.S., Inc.

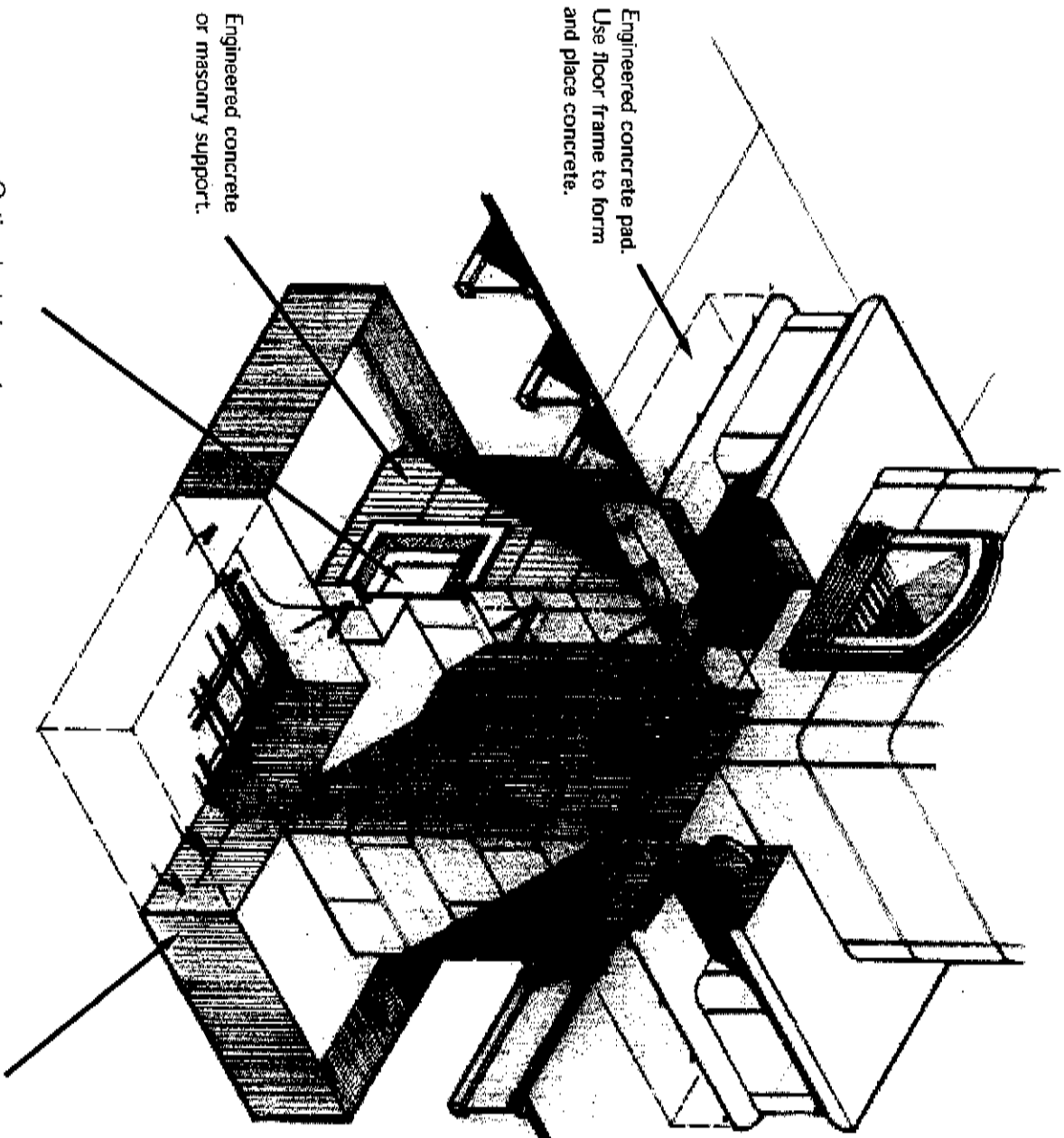
Foamglas® is a registered trademark of Pittsburgh Corning

Tulkivi provides these drawings as a conceptual aid for the North American market. They illustrate some common conditions installers may encounter and general methods which might be considered for addressing such conditions. Please note that this material is not tailored to any particular condition; is not intended to be a substitute for or supplant the technical manual TTM-1, and is not a warranty with respect to the merchantability, suitability, or fitness for a particular purpose regarding Tulkivi products or the methods illustrated. It is not designed to replace good engineering practice, local building codes or the formal and practical training and advice of a qualified builder. The material only suggests ways architects, engineers, builders, installers and owners can enhance their projects by including a Tulkivi fireplace, behoven or cookstove.

# CONCRETE / MASONRY SUPPORT

3

Freestanding Tulikivi unit.



Engineered concrete pad.  
Use floor frame to form  
and place concrete.

Engineered concrete  
or masonry support.

Optional ash dump door.

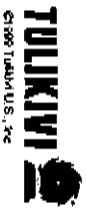
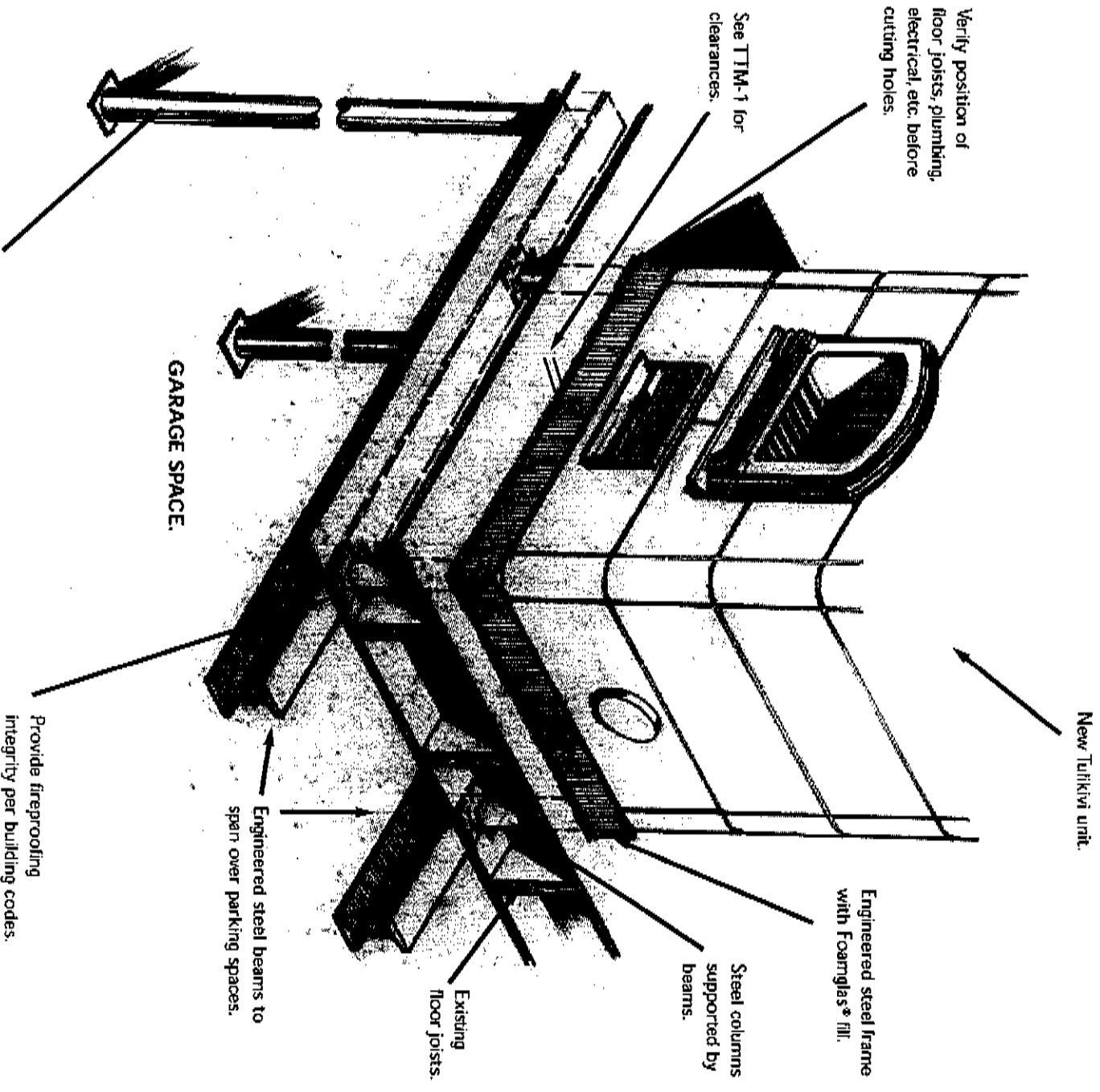
Engineered reinforced  
concrete footing.



© 2008 Tulikivi U.S., Inc.

Tulikivi provides these drawings as a conceptual aid for the North American market. They illustrate some common conditions installers have encountered and general methods which might be considered for addressing such conditions. Please note that this material is not tailored to any particular condition, is not intended to be a substitute for or supplant the technical manual TM-1, and is not a warranty with respect to the merchantability, suitability, or fitness for a particular purpose regarding Tulikivi products or the methods illustrated. It is not designed to replace good engineering practice, local building codes or the formal and practical training and advice of a qualified builder. The material only suggests ways architects, engineers, builders, installers and owners can enhance their projects by including a Tulikivi fireplace, bakeoven or cookstove.

# OVER GARAGE (REMODEL)

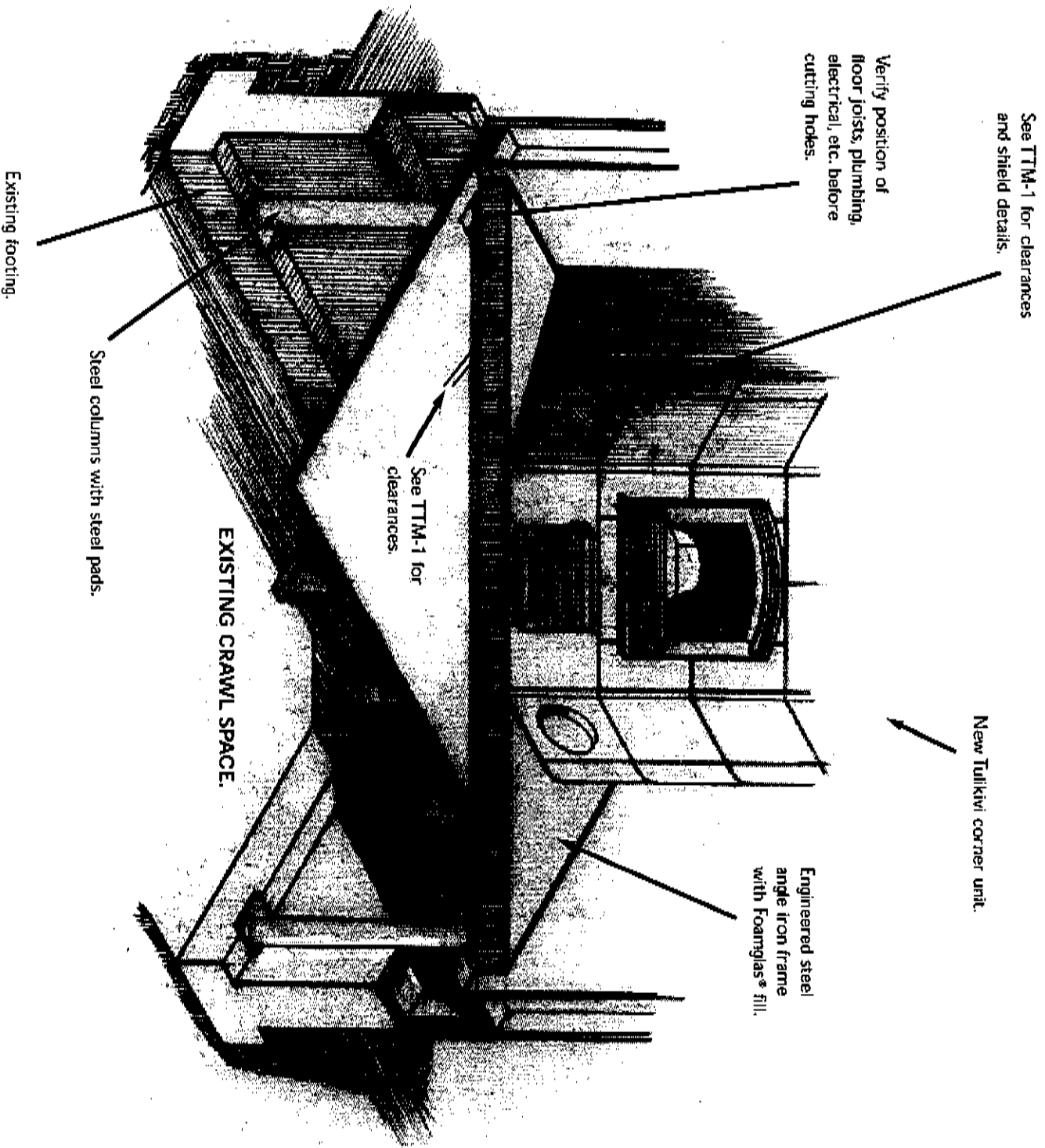


©2009 Tulkivi U.S., Inc.

*hanger*® is a registered trademark of Pittsburgh Corning.

Tulkivi provides these drawings as a conceptual aid for the North American market. They illustrate some common conditions installers have encountered and general methods which might be considered for addressing such conditions. Please note that this material is not tailored to any particular condition; is not intended to be a substitute for or supplant the technical manual TTM-1, and is not a warranty with respect to the merchantability, suitability, or fitness for a particular purpose regarding Tulkivi products or the methods illustrated. It is not designed to replace good engineering practice, local building codes or the formal and practical training and advice of a qualified builder. The material only suggests ways architects, engineers, builders, installers and owners can enhance their projects by including a Tulkivi fireplace, dishwasher or coalsstone.

## CORNER UNIT (REMODEL)

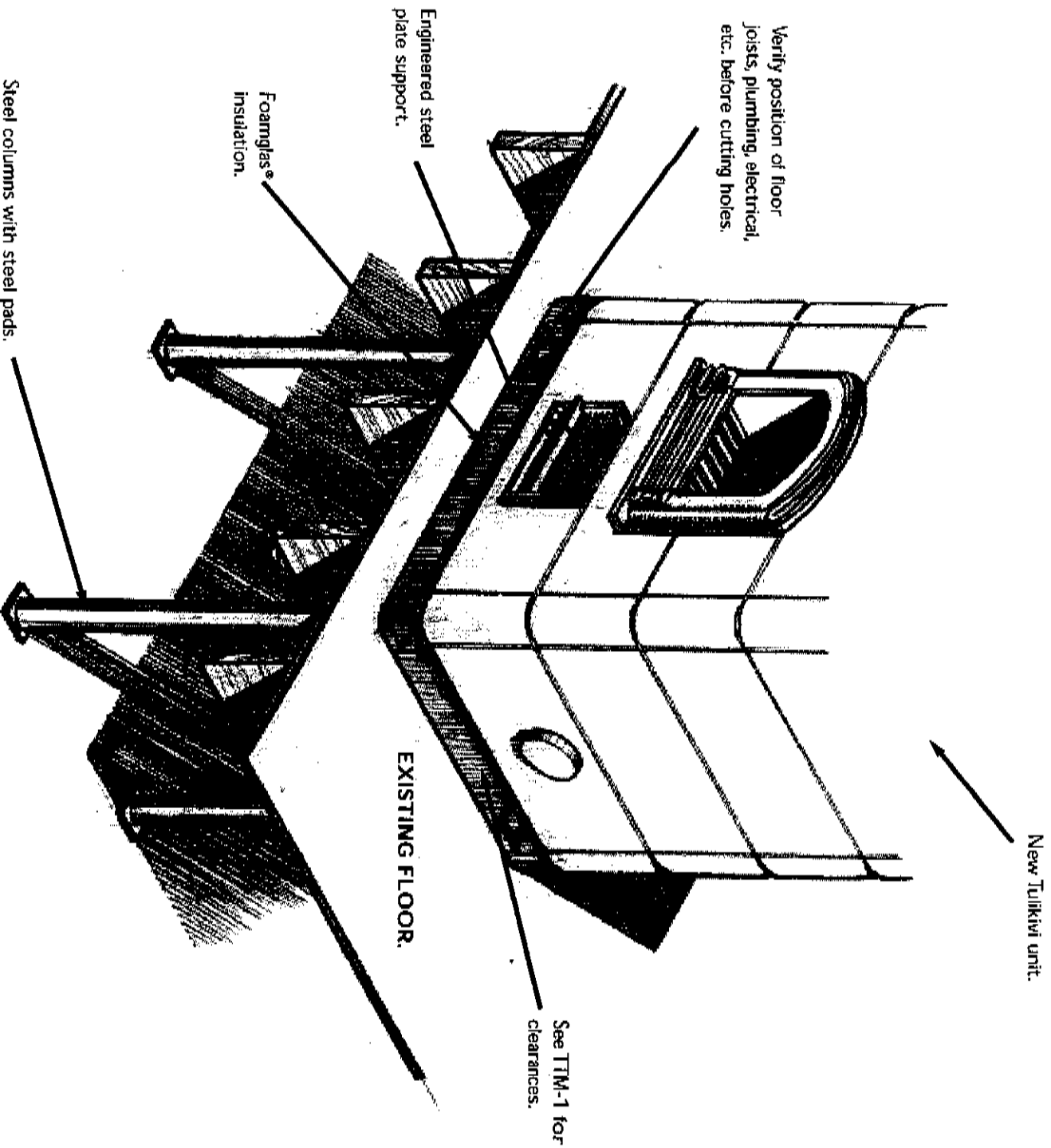


© 1998 Tulkivi U.S., Inc.

Foamglas® is a registered trademark of Pittsburgh Corning.

Tulkivi provides these drawings as a conceptual aid for the North American market. They illustrate some common conditions installers have encountered and general methods which might be considered for addressing such conditions. Please note that this material is not tailored to any particular condition; is not intended to be a substitute for or supplant the technical manual TTM-1; and is not a warranty with respect to the merchantability, suitability, or fitness for a particular purpose regarding Tulkivi products or the methods illustrated. It is not designed to replace good engineering practice, local building codes or the formal and practical training and advice of a qualified builder. The material only suggests ways architects, engineers, builders, installers and owners can enhance their projects by including a Tulkivi fireplace, bakeoven or cookstone.

# STEEL PLATE SUPPORT (REMODEL)



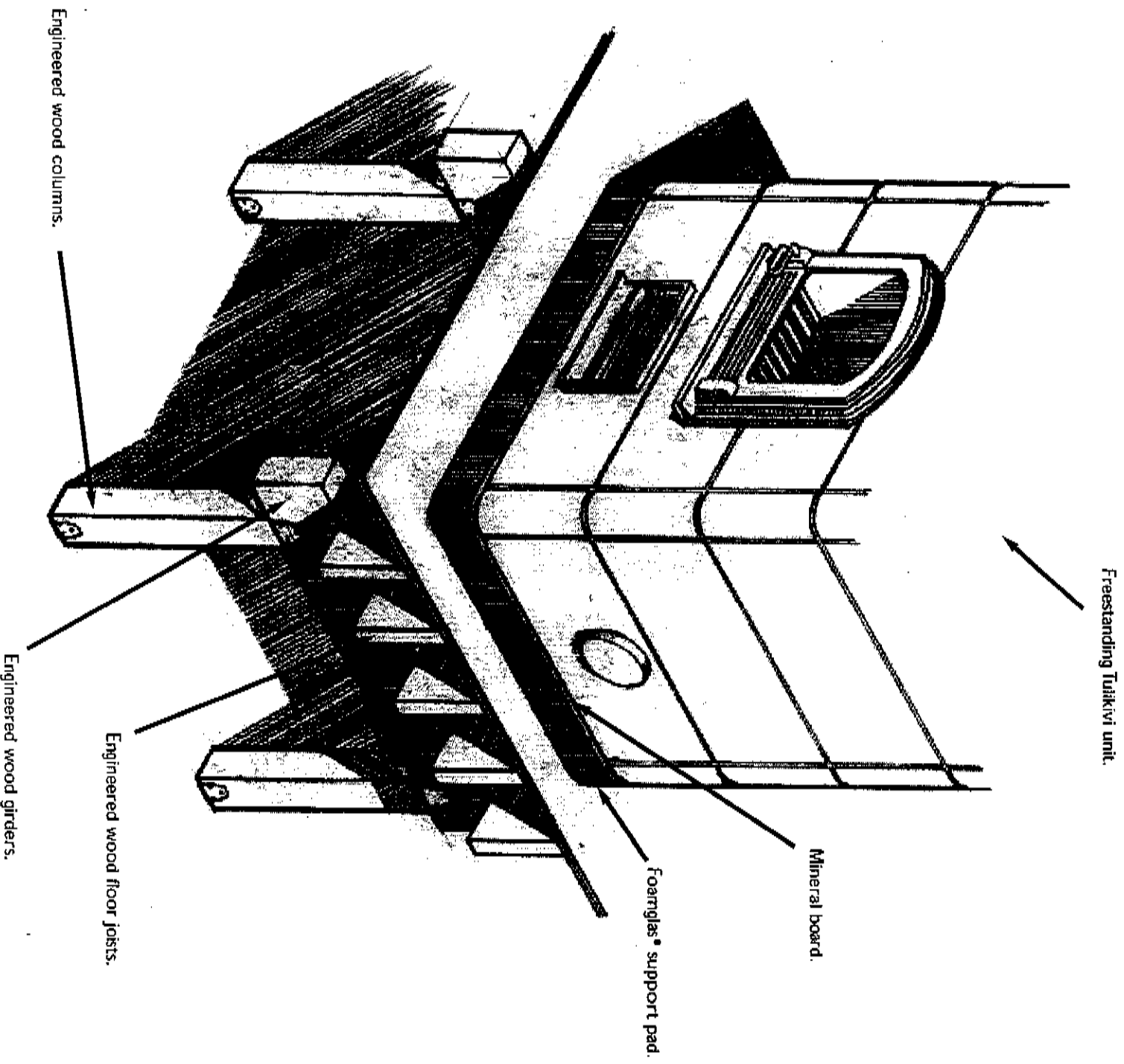
© 200 Tulikivi U.S., Inc.

Foamglas® is a registered trademark of Pittsburgh Corning.

Tulikivi provides these drawings as a conceptual aid for the North American market. They illustrate some common conditions installers have encountered and general methods which might be considered for addressing such conditions. Please note that this material is not tailored to any particular condition, is not intended to be a substitute for or supplant the technical manual TTM-1, and is not a warranty with respect to the merchantability, suitability or fitness for a particular purpose regarding Tulikivi products or the methods illustrated. It is not designed to replace good engineering practice, local building codes or the format and practical training and advice of a qualified builder. The material only suggests ways architects, engineers, builders, installers and owners can enhance their projects by including a Tulikivi fireplace, bakeoven or cookstove.

# TIMBER SUPPORT

7

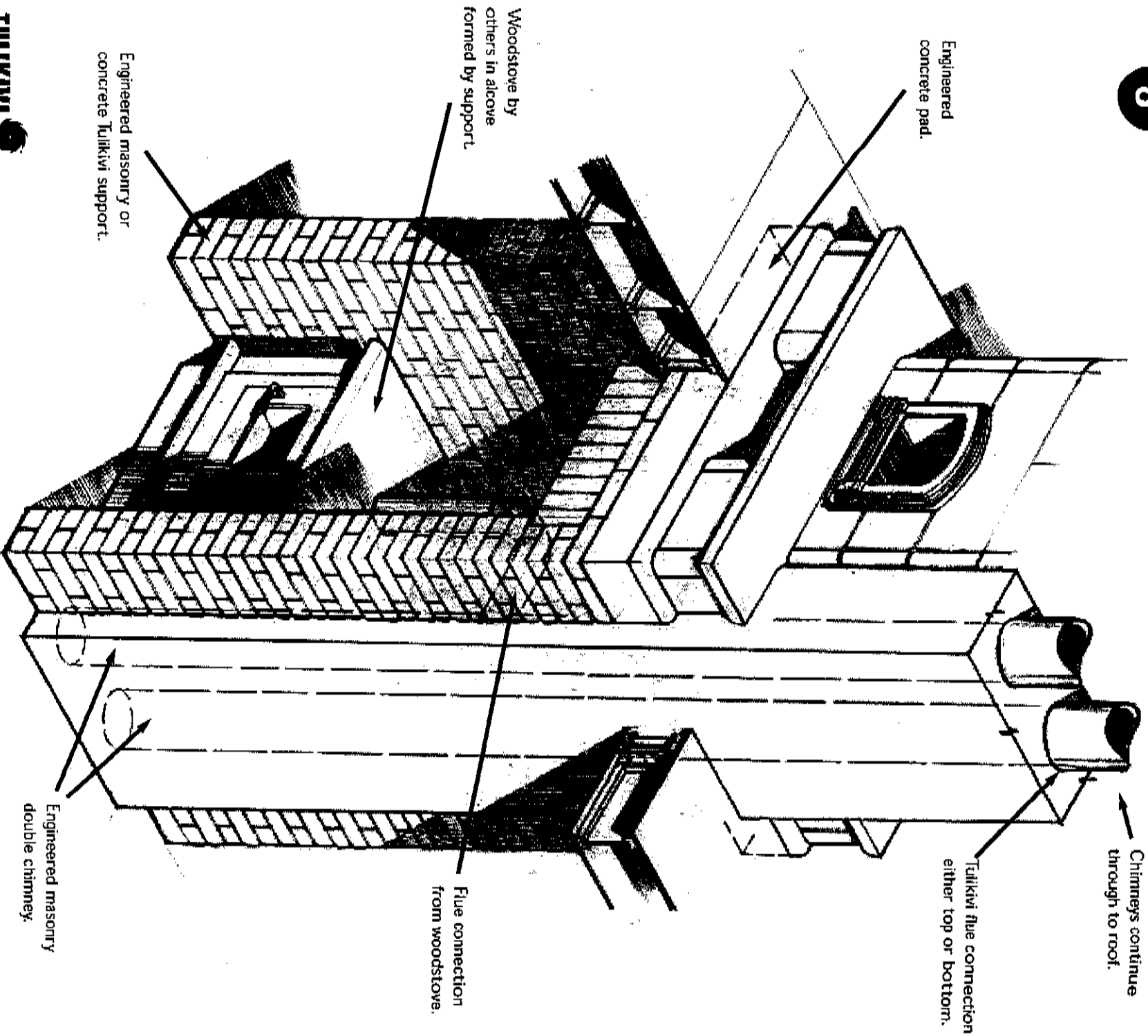


© 2008 Tulkivi U.S., Inc.

Tulkivi provides these drawings as a conceptual aid for the North American market. They illustrate some common conditions installers have encountered and general methods which might be considered for addressing such conditions. Please note that this material is not tailored to any particular condition, is not intended to be a substitute for or supplant the technical material TTM-1, and is not a warranty with respect to the merchantability, suitability or fitness for a particular purpose regarding Tulkivi products or the methods illustrated. It is not designed to replace good engineering practice, local building codes or the formal and practical training and advice of a qualified builder. The material only suggests ways architects, engineers, builders, installers and owners can enhance their projects by including a Tulkivi fireplace, bakeoven or cookstove.

# SECOND APPLIANCE

8

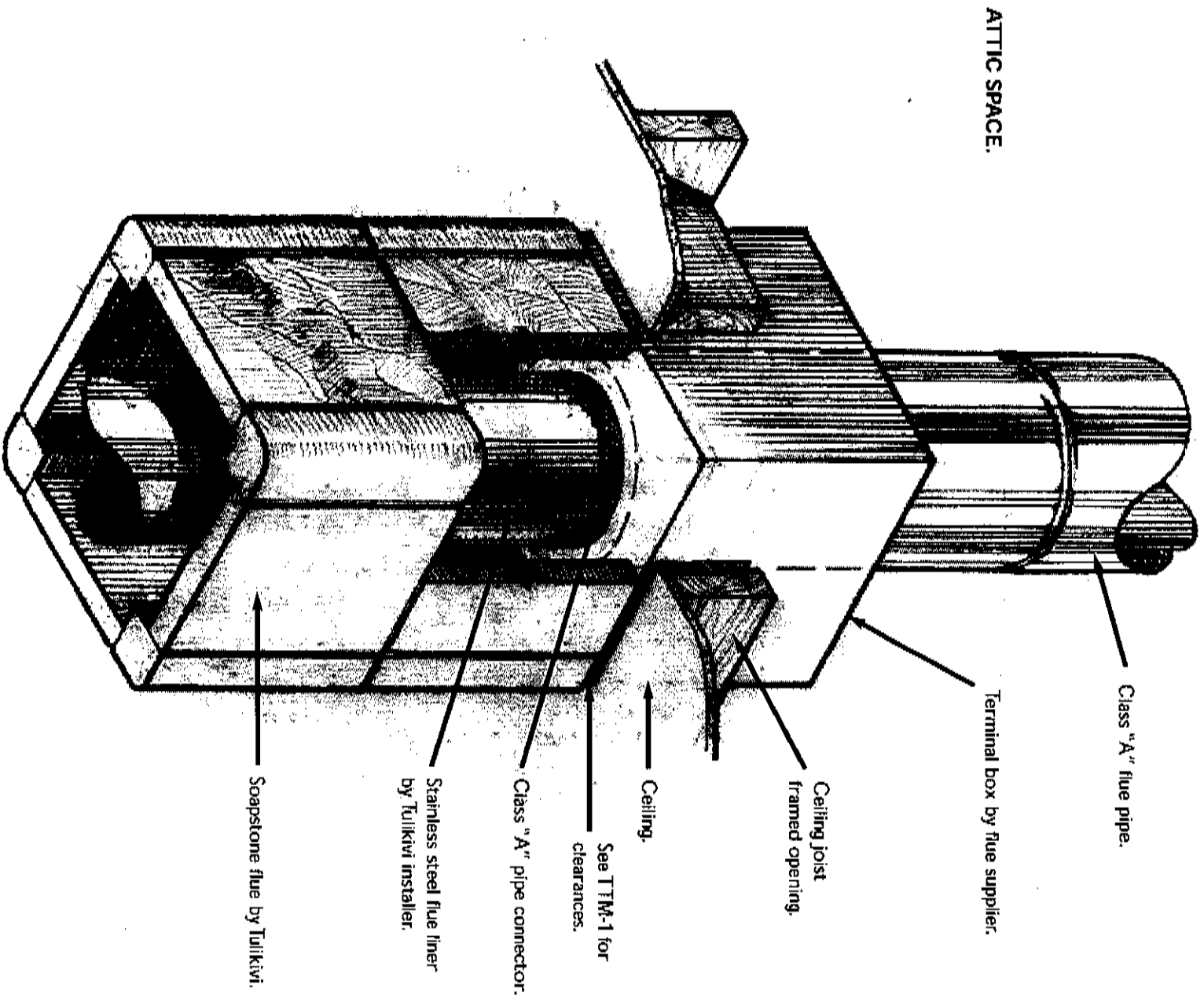


©1999 Tulikivi U.S., Inc.

Tulikivi provides these drawings as a conceptual aid for the North American market. They illustrate some common conditions installers have encountered and general methods which might be considered for addressing such conditions. Please note that this material is not tailored to any particular condition, is not intended to be a substitute for or supplant the technical manual TTM-1, and is not a warranty with respect to the merchantability, suitability, or fitness for a particular purpose regarding Tulikivi products or the methods illustrated. It is not designed to replace good engineering practice, local building codes or the formal and practical training and advice of a qualified builder. The material only suggests ways architects, engineers, builders, installers and owners can enhance their projects by including a Tulikivi fireplace, bakeoven or cookstove.

# CEILING CONNECTION

9



Tulkivi provides these drawings as a conceptual aid for the North American market. They illustrate some common conditions installers have encountered and general methods which might be considered for addressing such conditions. Please note that this material is not tailored to any particular condition, is not intended to be a substitute for or supplant the technical manual TTM-1, and is not a warranty with respect to the merchantability, suitability or fitness for a particular purpose regarding Tulkivi products or the methods illustrated. It is not designed to replace good engineering practice, local building codes or the formal and practical training and advice of a qualified builder. The material only suggests ways architects, engineers, builders, installers and owners can enhance their projects by including a Tulkivi fireplace, bakeoven or cookstove.

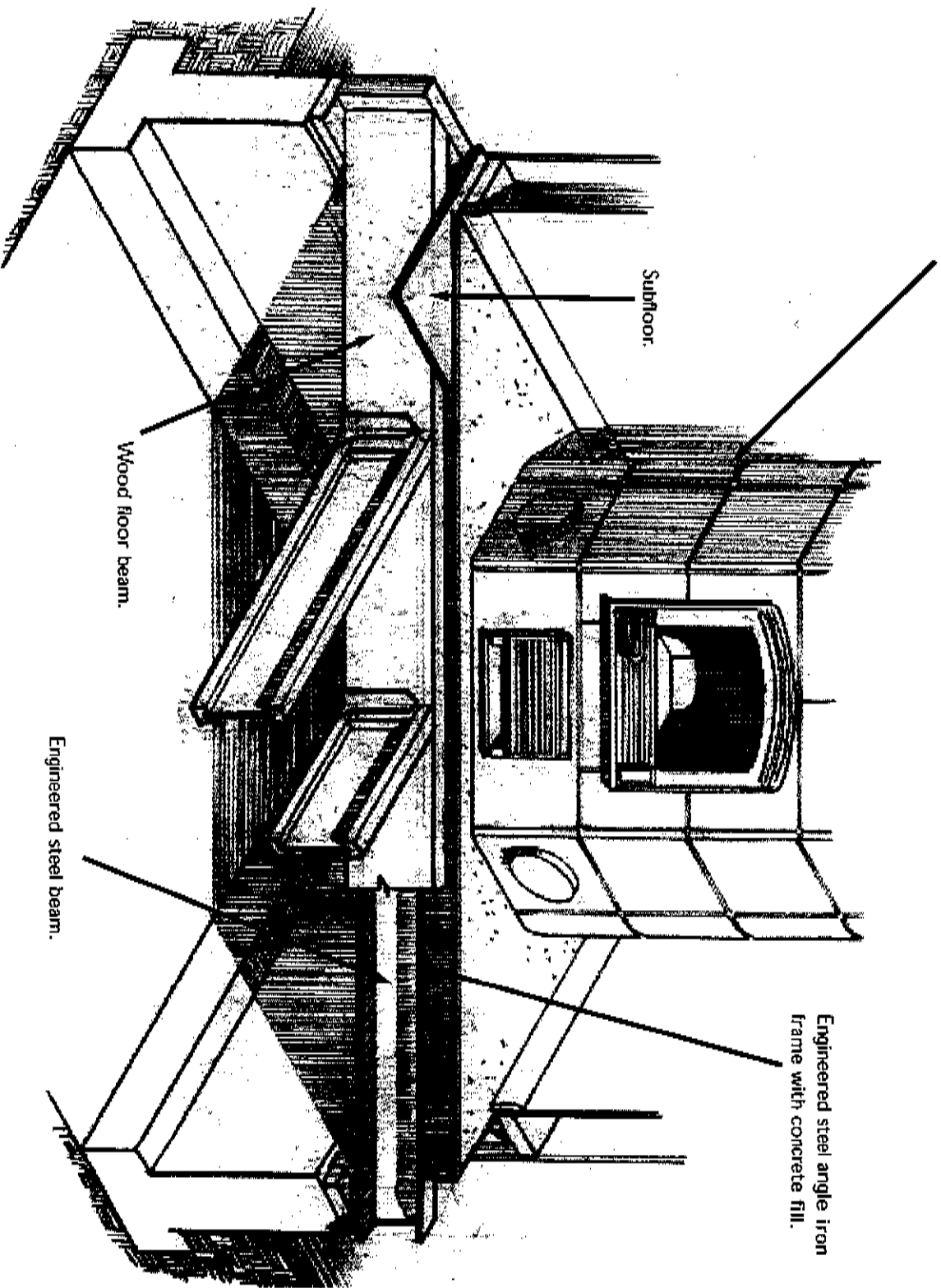


©1990 Tulkivi U.S., Inc.

10

# CORNER UNIT (NEW CONSTRUCTION)

See TTM-1 for clearances and shield details.

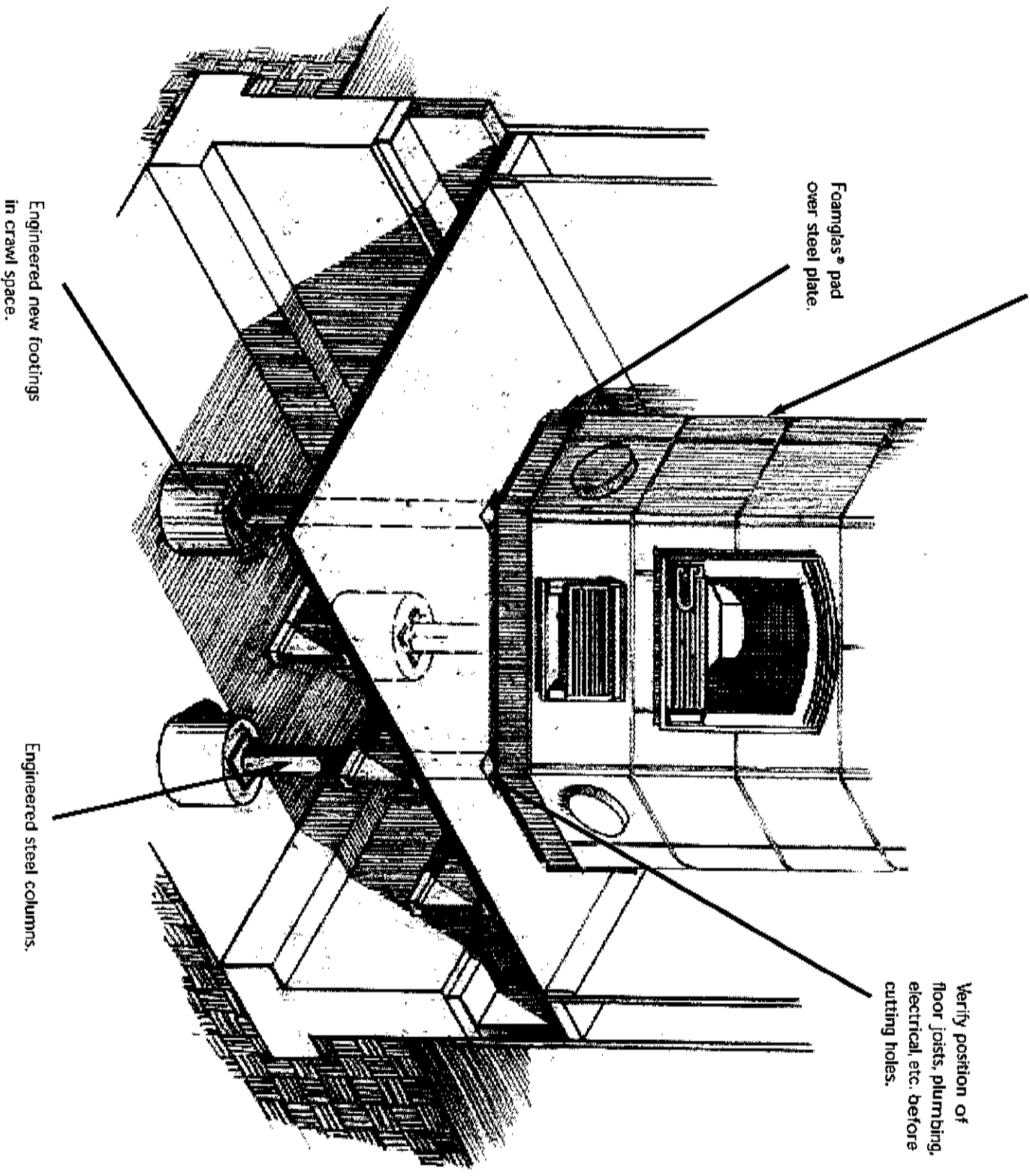


21 886 Tulkivi U.S., Inc.

Tulkivi provides these drawings as a conceptual aid for the North American market. They illustrate some common conditions installers have encountered and general methods which might be considered for addressing such conditions. Please note that this material is not tailored to any particular condition, is not intended to be a substitute for or supplant the technical manual TTM-1, and is not a warranty with respect to the merchantability, suitability, or fitness for a particular purpose regarding Tulkivi products or the methods illustrated. It is not designed to replace good engineering practice, local building codes or the formal and practical training and advice of a qualified builder. The material only suggests ways architects, engineers, builders, installers and owners can enhance their projects by including a Tulkivi fireplace, belvedere or cookstove.

# CORNER UNIT (REMODEL)

See TTM-1 for clearances and shield details.



©1999 Tulkivi S., Inc.

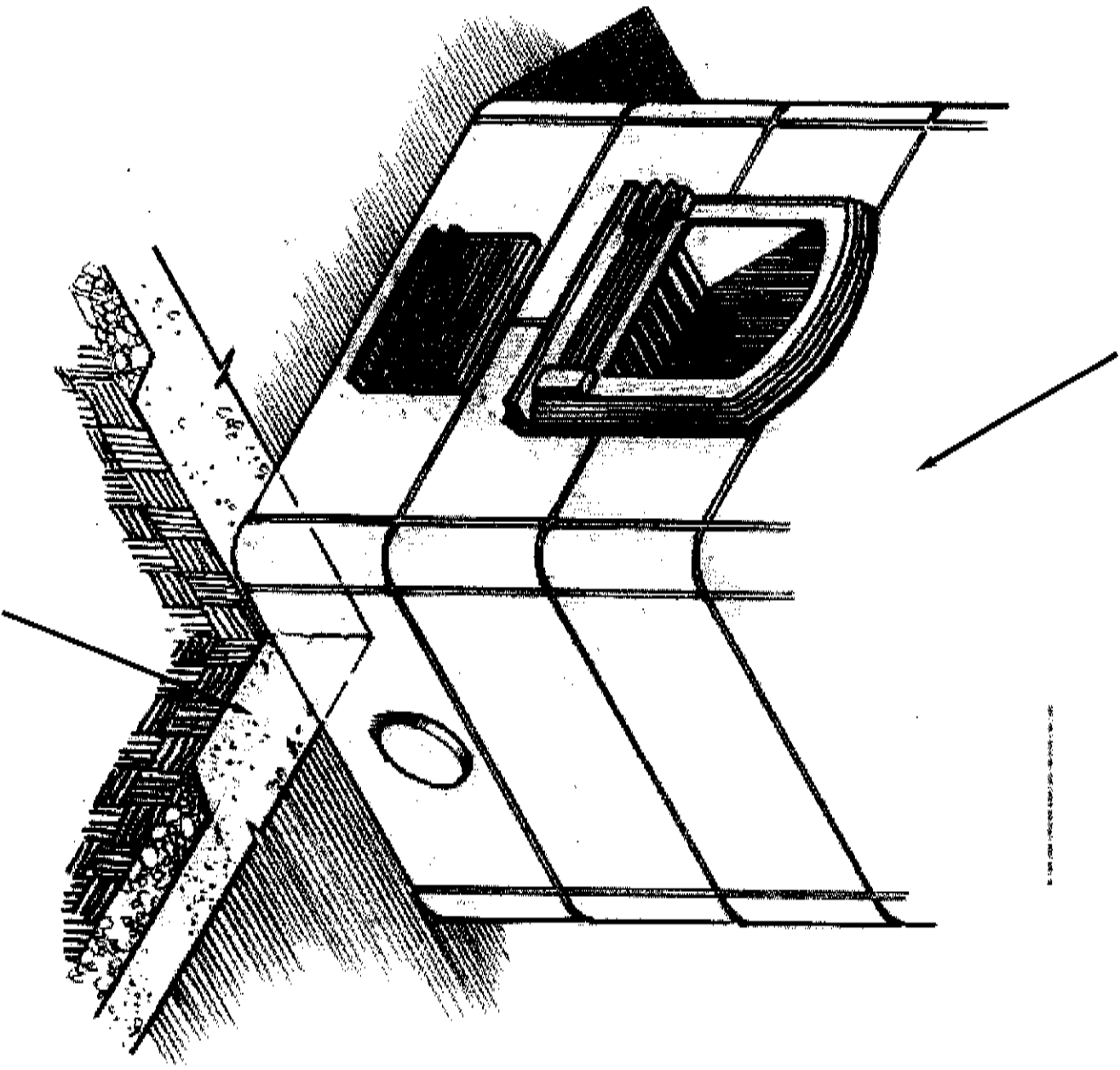
Tulkivi provides these drawings as a conceptual aid for the North American market. They illustrate some common conditions installers have encountered and general methods which might be considered for addressing such conditions. Please note that this material is not tailored to any particular condition, is not intended to be a substitute for or supplant the technical manual TTM-1, and is not a warranty with respect to the merchantability, suitability or fitness for a particular purpose regarding Tulkivi products or the methods illustrated. It is not designed to replace good engineering practice, local building codes or the formal and practical training and advice of a qualified builder. The material only suggests ways architects, engineers, builders, installers and owners can enhance their projects by including a Tulkivi fireplace, bakeoven or cookstove.

Foamglas® is a registered trademark of Pittsburgh Corning.

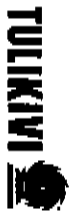
# SLAB ON GRADE

12

Freestanding Tulkivi unit.



Engineered thickened slab -  
certain soil types may support  
the unit without added thickness.



©2009 Tulkivi U.S., Inc.

Tulkivi provides these drawings as a conceptual aid for the North American market. They illustrate some common conditions installers have encountered and general methods which might be considered for addressing such conditions. Please note that this material is not tailored to any particular condition; it is not intended to be a substitute for or supplant the technical manual TTM-1, and is not a warranty with respect to the merchantability, suitability, or fitness for a particular purpose regarding Tulkivi products or the methods illustrated. It is not designed to replace good engineering practice, local building codes or the formal and practical training and advice of a qualified builder. The material only suggests ways architects, engineers, builders, installers and owners can enhance their projects by including a Tulkivi fireplace, bakeoven or cookstove.